

COLOUR CHART FOR PAREX MINERAL AND LIME RENDERS

Due to printing variations the colours indicated on this colour chart are offered as guidance only and should not be relied upon as a true representation of the actual colour of the finish. Colour will vary depending on the type of finish selected. Application by machine spray or texturing will increase the depth of the colour. Variation in colour due to weather, site conditions and method of application should be expected. For colour verification, request an actual sample in the colour and texture prior to ordering materials. Apply a sample of the finish to be used on the actual substrate before proceeding with the application. Due to the variation in applicator techniques, Parex Ltd is not responsible for the appearance or colour correctness of the applied finish. Colour, texture and finish must be verified and approved by owner prior to application. The colours marked with an * indicate the shades with a solar absorption coefficient over 0.7. These strong shades are more sensitive to colour alteration, efflorescence, lime bloom and to climatic constraints.

Ensure that humidity and temperature conditions are taken into account when they are used.

Please note: The shade of the same colour may also differ dependent upon the finishing aspect; e.g. The colour of a Textured finish adjacent to a Smooth finish in the same colour may appear to look different when viewed next to each other.

The colour chart below has been sorted according to colour and reference number:

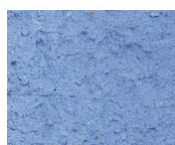
Some colours are not available for the heritage lime ranges.



B10
Moonscape



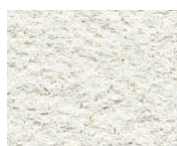
B20
Sky blue



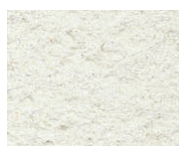
B30*
Azure blue



G60
Basalt grey



G00
Natural White



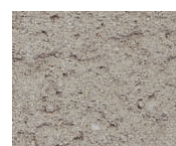
G10
White light



G20
Off-white



G30
Mouse grey



G40
Smoky grey



G50
Ash grey
Gris cendre



J39
Athens Sand



J10
Orange yellow



J20
Pale yellow



J30
Opal



J40
Sand yellow



J50
Straw yellow



J60
Pollen yellow



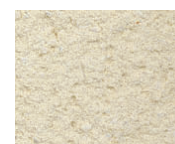
J70
Yellow ochre



O10
Sand



O20
Orange



O30
Orange beige



O40
Pale pinky beige



O50
Pinky beige



O60
Pinky orange



O70
Light ochre

If you have a specific colour you would like to match, contact Parex as we are able to create special colours. (Once a special colour sample has been approved there is a minimum order of one pallet of 40 x 30 Kg bags)

TEST PANEL

Prior to commencement on site it is recommended that a test panel is produced for inspection by the client, customer, architect etc, so that they may satisfy themselves with the finish, texture, colour and appearance of the render.

SAMPLES

Parex can provide colour samples for planning applications or for design consideration. These are generally available in a scraped finish. Other finishes can be provided to order.

COLOUR MATCHING OF MINERAL RENDERS

Parex are able to match other mineral render colours but we are unable to match a paint reference colour as the pigmentation process differs between mineral renders and synthetic renders.

Please note: Due to the vulnerability of dark colours to UV light we are unable to create very dark mineral render colours as the amount of colour pigment in mineral renders must not exceed 5% in the finished product. If this percentage is exceeded, the quality of the finished product may be harmed as the co-efficient of solar absorption would be above 0.7 which may cause cracking of the render finish.

					
		Brilliant white <small>This colour is product specific to Blanc du Littoral - p 6.</small>	O80 Orange earth	O90* Natural brick	R10 Pearly pink
					
R20 Sand pink <small>Sable rose</small>	R30 Violet pink	R40 Petal pink	R50 Old rose	R60 Strong pink	R70 Brick
					
R80* Sienna	R90* Brick red	T10 Silky grey	T20 Light sand	T30 Clay earth	T40 Orange sand
					
T50 Sandy earth	T60 Soft earth	T70 Beige earth	T80 Beige	T90 Pink earth	
					
V10 Stone	V20 Astral green	V30 Pale green	V40* Emerald green		